



Series	FLA FS SERIES	Warranty	1 Year
Volts	12	Design	Grp 27
Cells	6		
Terminal Type	DT		
Included Hardware	Stainless Steel K-Lock Nut		
Size & Thread	5/16"-18		
Cables	Optional: 19" 4/0 interconnect cable		

Charge | Discharge

Charge Voltage Range	14.7-15 V/cell @ 25°C (77°F)
Recommended Charge Current	15 A
Maximum Charge Current	25 A
Self-Discharge Rate	5%-10% per month at 25°C (77°F)

Capacity

Cold Crank Amps (CCA) 0°F / -18°C	660
Marine Crank Amps (MCA) 32°F / 0°C	825
Reserve Capacity (RC @ 25A)	185 Minutes
Reserve Capacity (RC @ 75A)	53 Minutes

Capacity Affect by Temperature	40°C (104°F)	25°C (77°F)	0°C (32°F)	-15°C (5°F)
	105%	100%	75%	50%

Hour Rate	Capacity / AMP Hour	Current / AMPs
@ 100 Hour Rate	140 AH	1.4 A
@ 20 Hour Rate	105 AH	5.25 A
@ 15 Hour Rate	99 AH	6.58 A
@ 10 Hour Rate	89 AH	8.93 A
@ 8 Hour Rate	87 AH	10.89 A
@ 5 Hour Rate	85 AH	17.01 A
@ 1 Hour Rate	38 AH	37.8 A

Specifications

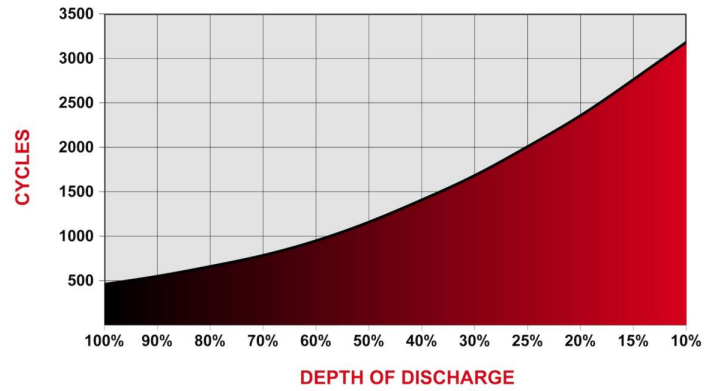
Weight	24.5 kg	54 lbs
Length	321 mm	12.63"
Width	171 mm	6.75"
Height Incl. Term.	238 mm	9.38"

Product measurements & weights are calculated based on sample data. Individual specifications are subject to vary due to the manufacturing process & battery components.

Container	ABS
Cover	ABS
Handles	Plastic Strap

- Plastics are UL94 HB (UL94-V2 available)
- Plastics are impact copolymer rated to ASTM D256, D5420
- Vented design with integral flame arrestor vent caps

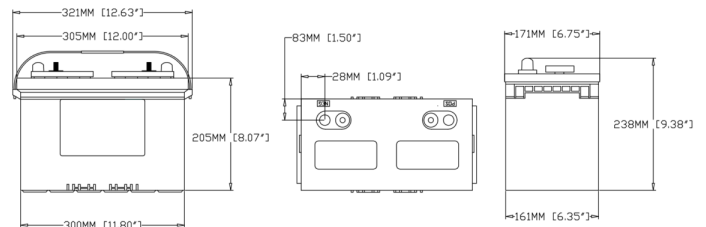
Cycle Life vs. Depth of Discharge



Voltage vs. Depth of Discharge

DISCHARGE	0%	25%	50%	75%	100%
20 HR AH RATE	2.10 V	2.07 V	2.00 V	1.92 V	1.75 V
10 HR AH RATE	2.10 V	2.06 V	1.98 V	1.89 V	1.75 V
3 HR AH RATE	2.10 V	2.03 V	1.95 V	1.86 V	1.75 V
1 HR AH RATE	2.10 V	2.01 V	1.93 V	1.84 V	1.75 V

Detailed Illustration



Designed in compliance with applicable BCI, DIN, BS & IEC standards. Tested in compliance to BCI & IEC standards.

intertek
0122624